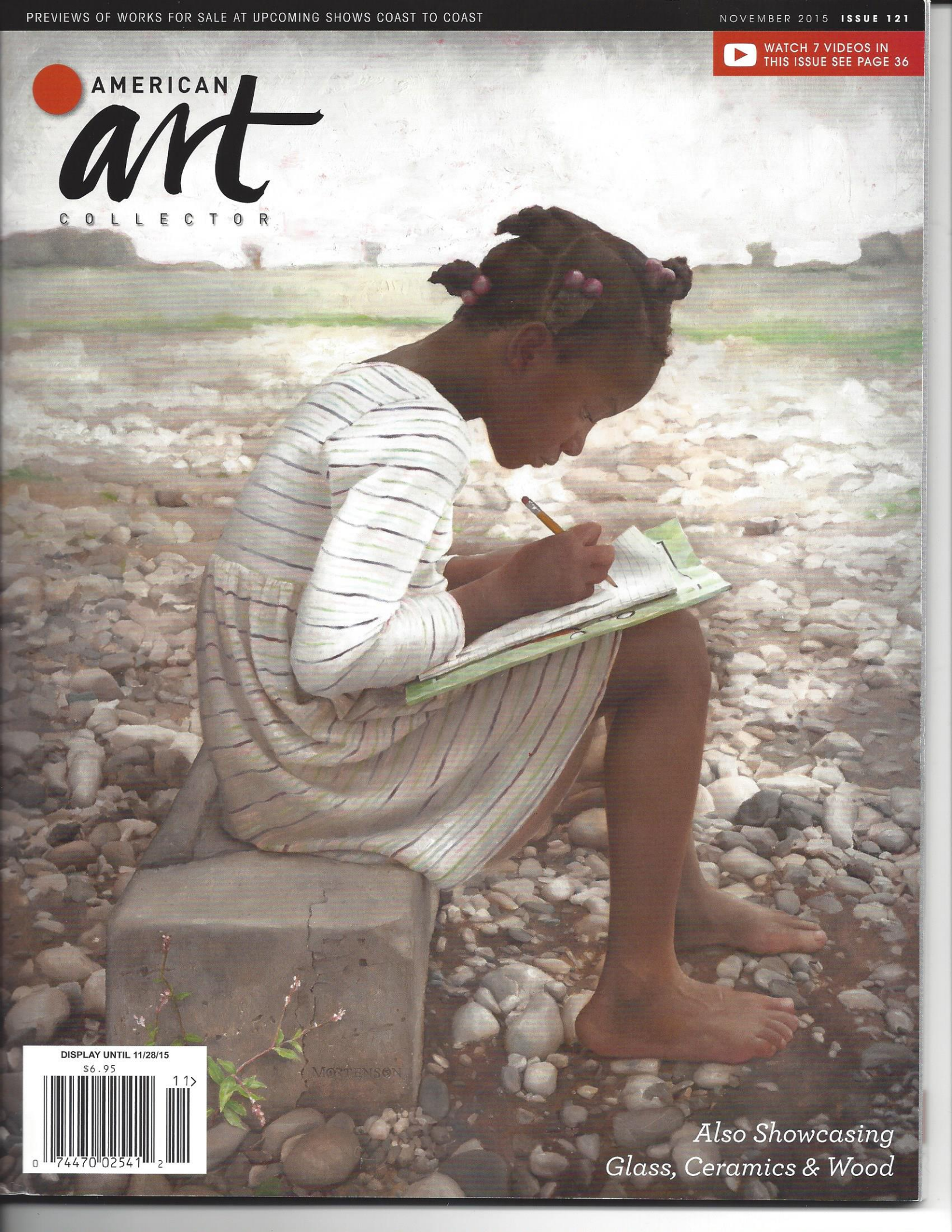


WATCH 7 VIDEOS IN THIS ISSUE SEE PAGE 36

# AMERICAN art COLLECTOR



MORTENSON

DISPLAY UNTIL 11/28/15

\$6.95

11 >



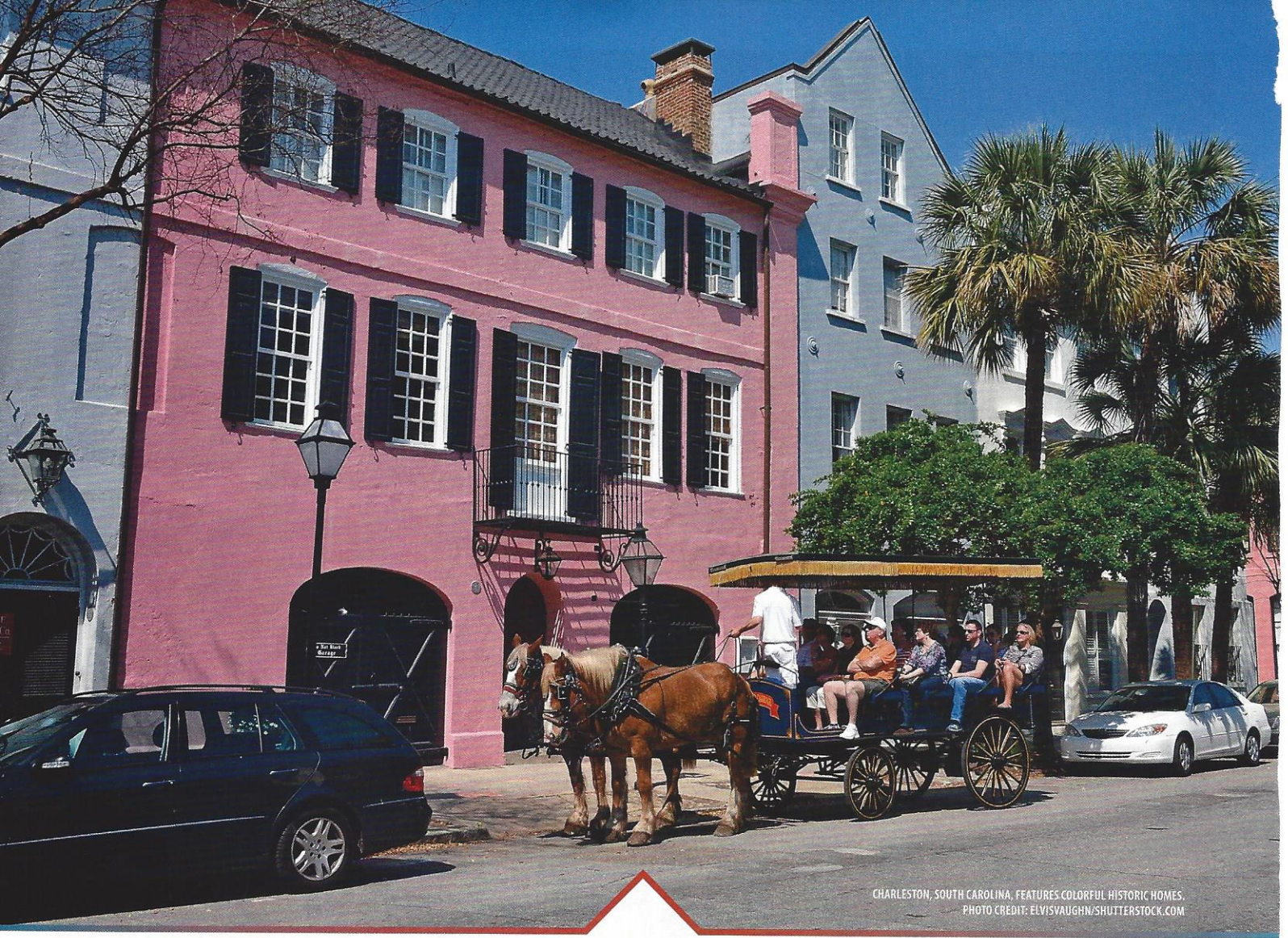
*Also Showcasing  
Glass, Ceramics & Wood*



*The Art Lover's Guide to Collecting Fine Art in*

# Charleston, Charlotte & the Carolinas





CHARLESTON, SOUTH CAROLINA, FEATURES COLORFUL HISTORIC HOMES.  
PHOTO CREDIT: ELVISVAUGHN/SHUTTERSTOCK.COM

*The Art Lover's Guide to Collecting Fine Art in*

# Charleston, Charlotte & the Carolinas

**S**panning the states of North and South Carolina are a plethora of locales brimming with arts and culture. Among the must-visit cities are Charleston and Pawleys Island in South Carolina and Charlotte, Chapel Hill, and Greensboro in North Carolina, to name a few. It is in these destinations that fine art flourishes, enticing collectors with galleries that are among the leaders in the nation, fine art museums that have national recognition, and established art fairs and events that continue to draw big names in the art world.

The historical city of Charleston is considered one of the finest small art stops in the United States, and is made up of four art districts: French Quarter, Gallery Row on Broad, Lower King, and Upper King. The majority of the galleries in the area are

walkable, allowing for diverse and appealing artwork to only be a few steps away. In August, the Charleston Gallery Association was formed, becoming a citywide organization with around 40 gallery members. On the first Friday of March, May, October, and December, the Charleston Gallery Association will host art walks, with the next outing on December 4 from 5 to 8 p.m.

Art events occur year-round in Charleston, attracting countless visitors to the city. One of the leading art festivals is the *Southeastern Wildlife Exposition*, held in 2016 from February 12 to 14. *SEWE* spotlights some of the best wildlife and sporting artists from around the nation, and features events such as the Quick Draw Speed Sculpt, where attendees can watch artists paint or sculpt works of art followed by a live auction. Another popular



BROAD STREET IN CHARLESTON, SOUTH CAROLINA, IS HOME TO A NUMBER OF FINE ART GALLERIES.  
PHOTO CREDIT: JON BILOUS/SHUTTERSTOCK.COM

event is the July *Palette & Palate Stroll* that sees galleries team up with local restaurants for a night of fine food and fine art.

Located 70 miles north of Charleston is Pawleys Island, which, for the past 25 years, has hosted the *Pawleys Island Festival of Music & Art*. As part of the annual festival are several visual art events: the Seaside Palette en Plein Air and Chalk Under the Oaks. The Seaside Palette en Plein Air event sees more than 50 artists painting for a day-and-a-half throughout the Georgetown Historic District. When the painting ends on the second day there is a Wet Paint Sale & Reception where visitors can meet the artists and purchase works.

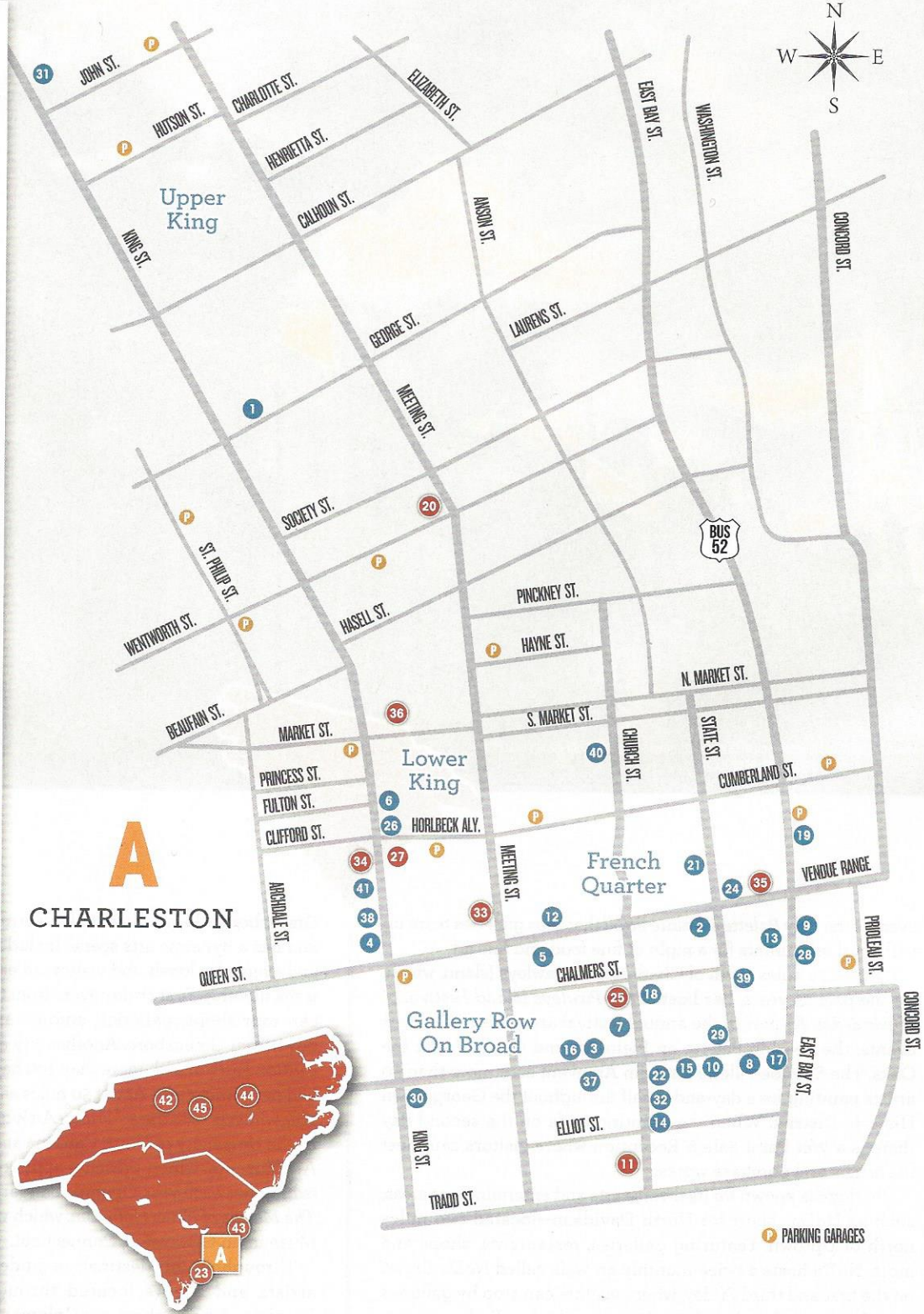
Charlotte is known for its diverse arts and entertainment areas, such as NoDa—short for North Davidson—located two miles north of Uptown. Featuring galleries, restaurants, shops and more, NoDa hosts a twice-monthly art walk called *NoDa Crawl!* on the first and third Friday, where visitors can stop by galleries from 6 to 9 p.m. Also held from 6 to 9 p.m. the first Friday of every month is the South End Gallery Crawl in the historic South End district of Charlotte. A popular yearly event in the city is *Palate to Palette*, a wine and art happening hosted at the McColl Center for Art + Innovation. For 2015 *Palate to Palette* will take place November 20 from 7 to 10 p.m.

Greensboro is located just under 100 miles northeast of Charlotte, and has a dynamic arts scene. Included in the area are galleries and events for locals and visitors to enjoy. One of the highlights is the monthly *First Friday* event from 6 to 9 p.m., where attendees can tour shops, galleries, studios and museums throughout downtown Greensboro. Another city event is the *17DAYS Arts & Culture Festival* with more than 100 happenings across the visual and performing arts. About 50 miles east of Greensboro is Chapel Hill, which boasts the *2<sup>nd</sup> Friday ArtWalk* from 6 to 9 p.m. monthly. At the University of North Carolina at Chapel Hill is the Ackland Art Museum, which presents approximately 10 to 12 changing exhibitions each year. Opening January 22, 2016, is *Walls of Color: The Murals of Hans Hofmann*, which was organized by the Bruce Museum in Greenwich, Connecticut.

Throughout this destination guide is insight to art galleries, artists and events located throughout North and South Carolina. Among them are **Coleman Fine Art**, **Cheryl Newby Gallery**, **Grand Bohemian Gallery**, **Hilarie Lambert**, **The John C. Doyle Art Gallery**, **LePrince Fine Art**, **Principle Gallery Charleston**, **Reinert Fine Art**, **Robert Lange Studios**, **The Art Shop**, **Tyndall Galleries**, and the **River Arts District** in Asheville, North Carolina.

# DESTINATION / CHARLESTON, CHARLOTTE & THE CAROLINAS

- 1 ALTERMAN STUDIOS
- 2 ANGLIN SMITH FINE ART
- 3 ANN LONG FINE ART
- 4 ATELIER GALLERY
- 5 ATRIUM ART GALLERY
- 6 THE AUDUBON GALLERY
- 7 BIRDS I VIEW GALLERY
- 8 CECIL BYRNE GALLERY
- 9 CHARLESTON ARTIST GUILD
- 10 COCO VIVO FINE ART
- 11 COLEMAN FINE ART  
79 Church Street, Charleston, SC 29401  
(843) 853-7000, info@colemanfinaart.com  
www.marywhyte.com, www.colemanfinaart.com
- 12 CORRIGAN GALLERY
- 13 COURTYARD ART GALLERY
- 14 DOG & HORSE FINE ART
- 15 EDWARD DARE GALLERY
- 16 ELLA WALTON RICHARDSON FINE ART
- 17 ELLIS-NICHOLSON GALLERY
- 18 GAYE SANDERS FISHER GALLERY
- 19 GORDON WHEELER GALLERY
- 20 GRAND BOHEMIAN GALLERY  
55 Wentworth Street, Charleston, SC 29401  
(843) 724-4130, dayna.caldwell@kesslercollection.com  
www.grandbohemiangallery.com
- 21 HAGAN FINE ART GALLERY
- 22 HELENA FOX FINE ART
- 23 HILARIE LAMBERT  
Charleston, SC (843) 822-1707  
lambertpaintings@gmail.com, www.hilambert.com
- 24 HORTON HAYES FINE ART
- 25 THE JOHN C. DOYLE ART GALLERY  
125 Church Street, Charleston, SC 29401  
(843) 577-7344, gallery@johncdoyle.com  
www.johncdoyle.com
- 26 JULIA SANTEN GALLERY
- 27 LEPRINCE FINE ART  
184 King Street, Charleston, SC 29401  
(843) 442-1664, info@leprince.com  
www.leprince.com
- 28 LOWCOUNTRY ARTISTS
- 29 MARTIN GALLERY
- 30 MARY MARTIN GALLERY
- 31 MITCHELL HILL
- 32 PEABODY WATERCOLORS
- 33 PRINCIPLE GALLERY CHARLESTON  
125 Meeting Street, Charleston SC 29401  
(843) 727-4500, art@principlecharleston.com  
www.principlegallery.com
- 34 REINERT FINE ART  
179 King Street, Charleston, SC 29401  
(843) 694-2445, www.reinertfineart.com
- 35 ROBERT LANGE STUDIOS  
2 Queen Street, Charleston, SC 29401  
(843) 805-8052, info@robertlangestudios.com  
www.robertlangestudios.com
- 36 SOUTHEASTERN WILDLIFE EXPOSITION  
Charleston, SC, (843) 723-1748  
www.sewe.com
- 37 SPENCER ART GALLERY I & II
- 38 THE SPORTSMAN GALLERY
- 39 STEWART FINE ART
- 40 STUDIO 151 FINE ART
- 41 THE SYLVAN GALLERY



## ALSO FROM SOUTH CAROLINA AND NORTH CAROLINA

**42 THE ART SHOP**  
3900-A W. Market Street, Greensboro, NC 27407  
info@artshopnc.com, www.artshopnc.com

**43 CHERYL NEWBY GALLERY**  
11096 Ocean Highway, Pawleys Island, SC 29585  
(843) 979-0149, cnewby@cherylnewbygallery.com  
www.cherylnewbygallery.com

**44 JUDY CRANE**  
(919) 522-0499, jc.judycrane@gmail.com  
www.judycrane.com

**45 TYNDALL GALLERIES**  
University Place, 201 S. Estes Drive  
Chapel Hill, NC 27514, (919) 942-2290 info@tyndallgalleries.com, www.tyndallgalleries.com



## ROBERT LANGE STUDIOS

2 Queen Street  
Charleston, SC 29401  
(843) 805-8052  
info@robertlangestudios.com  
www.robertlangestudios.com

Robert Lange Studios is a gallery space run by artist and gallery owners **Megan** and **Robert Lange**. As such, it is dedicated to the development of an ongoing dialogue among artists from a diverse range of artistic disciplines at differing levels of their careers. The gallery has been featured in *American Art Collector*, *National Geographic Traveler*, the *Huffington Post*, and on MSNBC, and it was voted the best gallery in Charleston by



*Charleston Living Magazine* in 2015.

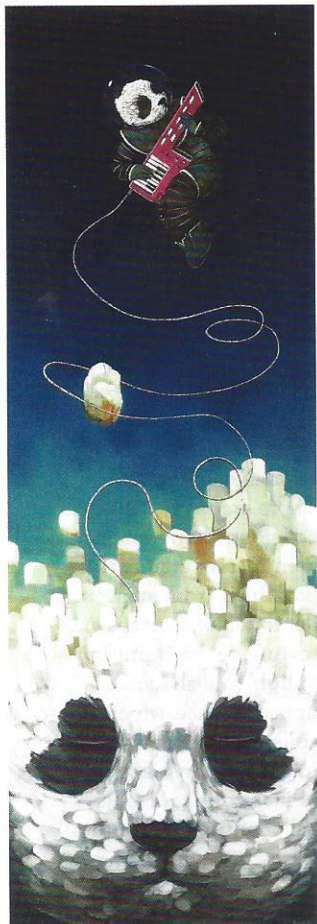
Robert Lange Studios boasts one of the most sought-after residency programs in the South and has housed artists from around the world. In addition to the gallery's 6,000-square-foot space on Queen Street, Robert Lange Studios expanded in 2014 to curate the exhibition space at

The Vendue, Charleston's art hotel. The hotel's public areas feature two to three different exhibits per year, presenting the best in progressive art. The hotel was named by *Travel + Leisure* as the fourth best hotel in the U.S., and the gallery appeared on the *Today* show shortly after the announcement.

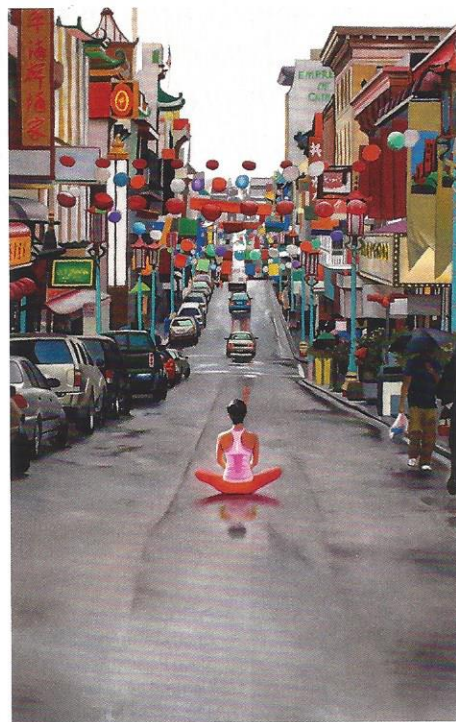
Looking ahead, the November exhibition,

*Serenade*, features the work of contemporary painter **Matthew Bober** and is a collection of macabre still life paintings presented in juxtaposition against vibrant backgrounds. Bober, currently located in New York, has been working for Jeff Koons for the past eight years as an instrumental part of Koons' painting guild. Under Koons, Bober realized his own unique style, and over the past two years has been building a body of work that will be presented in his first solo show this November.

In December the gallery will be having an explorative solo show for a young artist named **Brett Scheifflee**. This will be his first showing of work at Robert Lange Studios. He says of his painting, "Over time, one's life and vision may change, but their beliefs can stay untouched. Every experience, color and gesture will eventually coalesce into an echoing pictorial language that cannot be imagined in the present. Although I have much of my life left to live, every time I set to work, I believe that if I can share just a small part of something authentic and beautiful it will all be worth it."



2

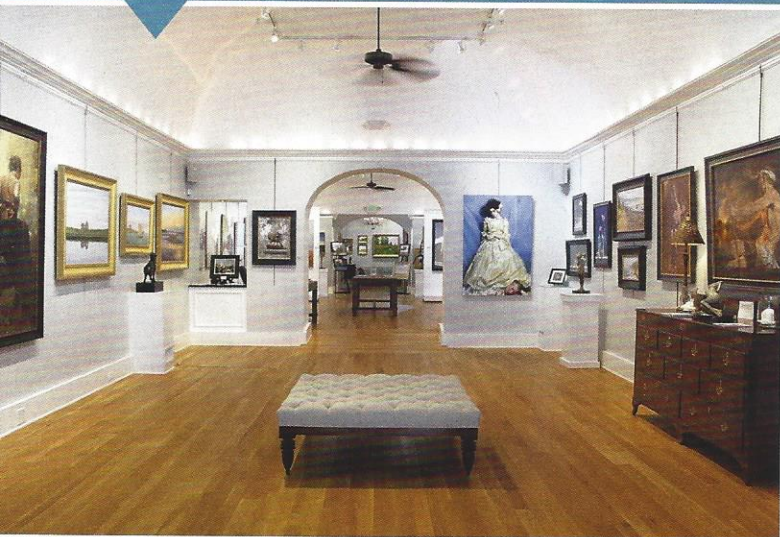


3

**1** Robert Lange Studios has 6,000 square feet of space on Queen Street, featuring a diverse range of artistic disciplines.

**2** Robert Lange Studios, *Everyone Dreams of Being a Rock Star*, oil on panel, 36 x 12", by Nathan Durfee.

**3** Robert Lange Studios, *Quieting the Mind*, oil on panel, 12 x 8", by Robert Lange.



1

## PRINCIPLE GALLERY CHARLESTON

125 Meeting Street  
Charleston, SC 29401  
(843) 727-4500  
art@principlecharleston.com  
www.principlegallery.com

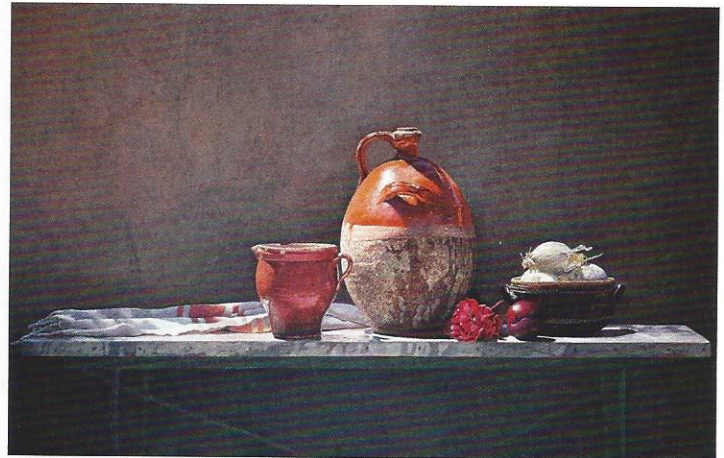
Principle Gallery Charleston finds joy in sharing museum-quality works from established American and international artists within the realm of contemporary and classical realism. The gallery invites visitors into its light-filled space for exhibitions featuring fresh, exciting work from the many multifaceted and diverse Principle Gallery artists.

Featured artists include:  
**Jorge Alberto, Lynn**

**Boggess, Nancy Bush, Gene Costanza, Barbara Flowers, Greg Gandy, Frank Gardner, David Hettinger, Karen Hollingsworth, James Neil Hollingsworth, Robert Liberace, Denise LaRue Mahlke, Jeremy Mann, Teresa Oaxaca, Larry Preston, Sergio Roffo, Alejandro Rosemberg, Lynn**

*"I find [Charleston] to be brimming with talented artists, noted sculptors and intriguing photographers. I am simply amazed by the amount of international art collectors that visit Principle Gallery as a direct destination on their quest to purchase pieces for their art collection."*

— Frank Conrad Russen, director, Principle Gallery Charleston



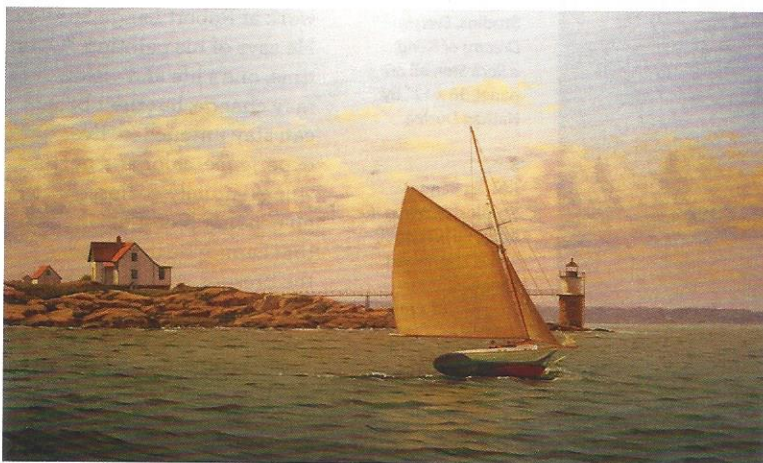
2

**Sanguedolce, Terry Moore Strickland, Anna Wypych, and more.**

In November, the gallery will host the group exhibition *Inspirational Forms* featuring the newest works of Gardner, Gandy, **Alexander Adell, Valerio D'Ospina, Gavin Glakas, Jane Chapin, Francis Livingston, and Maya**

**Kulenovic.** The show will be on display November 6 to 30, with a reception on opening night from 5 to 8 p.m.

The appreciation of architecture has always been a prevalent subject matter in art, whether it be sweeping marble arches, twisting modern staircases or simply the dynamic details



3

**1**  
Principle Gallery Charleston highlights artists working in contemporary and classical realism.

**2**  
Principle Gallery Charleston, *Pastoral Suite: Sienna*, egg tempera on panel, 32½ x 49½", by Colin Fraser.

**3**  
Principle Gallery Charleston, *Friendship Sloop Passing Ram Head Light*, oil on panel, 18 x 30", by Sergio Roffo.

of an ancient Roman basilica. There are many aspects to consider when representing architecture elements in paintings, from an accurate depiction of surfaces and texture, to the capturing of light and shadow of an unusual space, which can collectively express numerous interpretations. The paintings of *Inspirational Forms* will identify architectural elements in detail and their relationship to the surrounding landscape.



1  
Coleman Fine Art represents watercolorist Mary Whyte and features the gilded frames of Smith Coleman.

2  
Coleman Fine Art, *Little Santee*, watercolor on paper, 19¾ x 28¾", by Mary Whyte.

3  
Coleman Fine Art, *Striped Stocking*, watercolor on paper, 22¾ x 11¼", by Mary Whyte.

## COLEMAN FINE ART

79 Church Street  
Charleston, SC 29401  
(843) 853-7000  
info@colemanfineart.com  
www.marywhyte.com  
www.colemanfineart.com

Coleman Fine Art exclusively represents watercolorist **Mary Whyte**, an internationally acclaimed artist, teacher and author. Whyte is best known for her watercolor portraits and her *Lowcountry Series*, a moving collection of watercolors depicting the culture and heritage of the Gullah people from the sea islands of the Carolinas. Coleman Fine Art is located "South of Broad" in the historical district of downtown Charleston. Founded by master gilder **Smith Coleman** in 1974, Coleman Fine Art is one of the few galleries in Charleston that offers custom museum-quality framing and frame restoration.

"The city of Charleston is a pocket of paradise in the South. Charleston remains the fine art destination leader in the southeastern



2  
art market," says Sharon Crawford, gallery director of Coleman Fine Art. "Gallery traffic continues to increase, with visitors and new collectors from across the country and the world. We are excited about the newly formed Charleston Gallery Association."

November 11 to 14 a

gilding workshop will be held at the gallery. Through January 3, 2016, Whyte's solo exhibition *A Portrait of Us* will be on view at the Mennello Museum of American Art in Orlando, Florida. The show moves to ArtCenter Manatee in Bradenton, Florida, from January 12 to February 19.



3

*"The city of Charleston is a pocket of paradise in the South. Charleston remains the fine art destination leader in the southeastern art market. Gallery traffic continues to increase, with visitors and new collectors from across the country and the world."* —Sharon Crawford, gallery director, Coleman Fine Art





**1**  
LePrince Fine Art showcases work from select artists from across the United States and is the studio for owner and artist Kevin LePrince.

**2**  
**LePrince Fine Art,**  
*2<sup>nd</sup> Presbyterian Church*, oil, 30 x 30", by Kevin LePrince.

**3**  
**LePrince Fine Art,**  
*Early Oast*, oil, 30 x 20", by Mark Bailey.

## LEPRINCE FINE ART

184 King Street  
Charleston, SC 29401  
(843) 442-1664  
info@leprince.com  
www.leprince.com

LePrince Fine Art is located in the heart of the historic district on King Street in Charleston, South Carolina. The gallery is open seven days a week and welcomes collectors, artists seeking inspiration and curious passers-by alike.

Founded in 2015 by artist **Kevin LePrince**, the gallery is quickly becoming known as a hub for creativity. The gallery showcases a few select artists from across the United States working primarily in oils with an impressionistic slant. Each artist is able to display a full body of work and is constantly encouraged to experiment, explore and push their creative limits.

The gallery is outfitted to



2

function as LePrince's primary studio. Patrons, when entering, immediately notice the smell of the oil paints and then become enthralled with being able to see works in various stages of completion—it's a rare peek behind the scenes



3

they thoroughly enjoy.

The gallery houses a large body of work from LePrince, **Mark Bailey**, **Ignat Ignatov**, and **Vicki Robinson**. Bailey's interiors capture a distinct narrative people can identify with. Ignatov's figures and

cityscapes are stunning and masterfully executed. Robinson's Lowcountry scenes are light-filled and rich in color. LePrince's palette evolves daily with fresh takes on moody marshes and stylized depictions of wildlife.



1



2

## REINERT FINE ART

179 King Street  
Charleston, SC 29401  
(843) 694-2445  
[www.reinertfineart.com](http://www.reinertfineart.com)

Reinert Fine Art showcases the contemporary impressionist works in oil by **Rick Reinert**, 35 other oil painters and a bronze sculpture garden gallery. Visitors can watch Reinert's paintings come to life in his studio-gallery almost every day of the year. Reinert shares, "If I don't paint for one day, I feel like I'm missing something—Charleston and the Lowcountry offer a lifetime of inspiration."

Other widely recognized artists represented at the gallery include **Neil Patterson**, **Zhiwei Tu**, and



3

**Christopher Zhang**. Patterson and Tu are Oil Painters of America Master members.

The Charleston, South Carolina, gallery's outside courtyard has been converted to a sculpture garden offering fine art in bronze. Reinert's workshops and gallery events are memorable in this new, one-of-a-kind "garden" setting.

A second location of Reinert Fine Art opened October 2015 in Blowing Rock, North Carolina, and represents many of the same artists.

**1**  
Reinert Fine Art, *Moonlight on the Ashley*, oil on linen canvas, 48 x 36", by Rick Reinert.

**2**  
Reinert Fine Art, *Three Swans*, oil on canvas, 40 x 30", by Christopher Zhang.

**3**  
Reinert Fine Art, *Wedding Girl*, oil on canvas, 16 x 12", by Zhiwei Tu.



## GRAND BOHEMIAN GALLERY

55 Wentworth Street  
Charleston, SC 29401  
(843) 724-4130  
dayna.caldwell@kesslercollection.com  
www.grandbohemiangallery.com

The Grand Bohemian Gallery, located within the luxury hotels and resorts of The Kessler Collection, is one of the most eclectic and visually stimulating art galleries in the nation. The gallery features local, regional and international artists, including acclaimed Italian wildlife artist **Stefano Cecchini** and French colorist expressionist **Jean Claude Roy**. Grand Bohemian Gallery sources unusual collections for the everyday collector, and there's something for everyone.

"The art market in Charleston is at a pivotal moment," says Dayna Lorraine Caldwell, gallery director of the Grand Bohemian Gallery in Charleston. "National and international cultures are redefining what art is. Art is two-dimensional and three-dimensional; it's wearable, digital and interactive. As a world destination, Charleston is engaging in this conversation. The art scene here is a melting pot of Old World and New

*"The art market in Charleston is at a pivotal moment. National and international cultures are redefining what art is. Art is two-dimensional and three-dimensional; it's wearable, digital and interactive. As a world destination, Charleston is engaging in this conversation. The art scene here is a melting pot of Old World and New World, of past and future."*

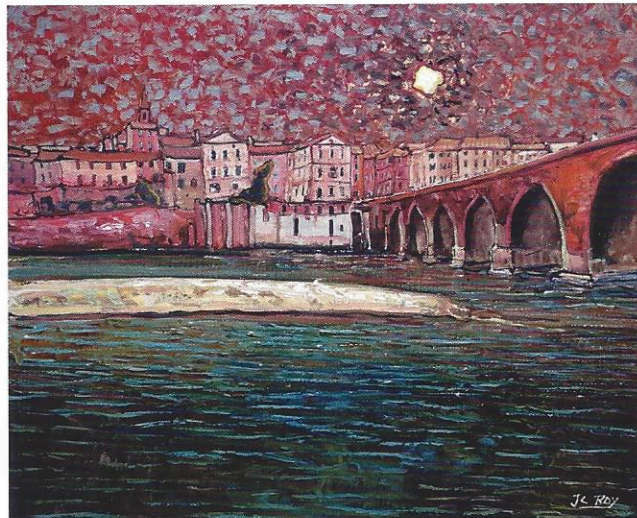
— Dayna Lorraine Caldwell, director, Grand Bohemian Gallery



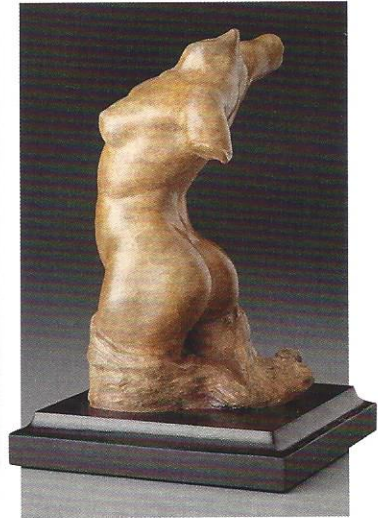
1 The Grand Bohemian Gallery in Charleston, South Carolina.

2 Grand Bohemian Gallery, *Le Vieux Pont, Albi*, oil on canvas, 24 x 29", by Jean Claude Roy.

3 Grand Bohemian Gallery, *Torso Victorious*, bronze, 7½ x 5 x 4½", by Lauren Mills.



2

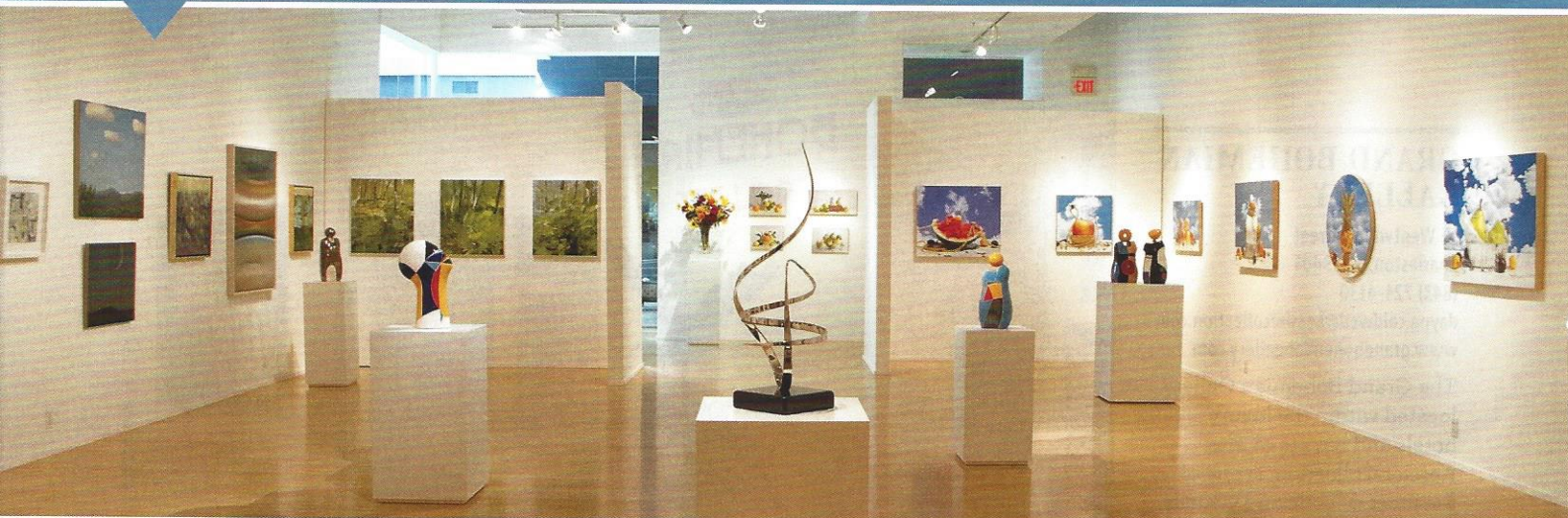


3



World, of past and future. At Grand Bohemian Gallery we endeavor to offer an enriching, artful experience with art that reflects global perspectives in varying media."

November 13 to December 31, the gallery will host a solo exhibition for Roy. On November 13 will be a private preview dinner, and on November 14 will be a wine blending and opening reception, both with the artist.



1

## TYNDALL GALLERIES

University Place  
201 S. Estes Drive  
Chapel Hill, NC 27514  
(919) 942-2290  
info@tyndallgalleries.com  
www.tyndallgalleries.com

The Tyndall Galleries, founded in 1990 and located in the heart of the Research Triangle near three great universities in Chapel Hill, North Carolina, is a refreshing combination of Southern hospitality and international sophistication.

"We are thrilled to meet and work with collectors from around the world and love our faithful regional clients, who have supported us over so many years," says Jane Shuping Tyndall, owner and director of the gallery. "Thankfully, the art market in the Triangle is strong and expanding exponentially with the extraordinary growth of the region."

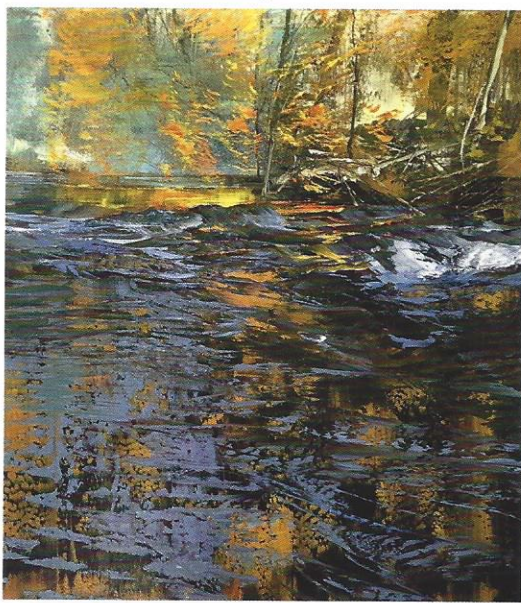
Representing the finest

*"We are thrilled to meet and work with collectors from around the world and love our faithful regional clients, who have supported us over so many years. Thankfully, the art market in the Triangle is strong and expanding exponentially with the extraordinary growth of the region."*

—Jane Shuping Tyndall, owner and director, Tyndall Galleries

1

Tyndall Galleries represents artists from North Carolina and the Southeast at its location in Chapel Hill, North Carolina. Photo by SP Murray.



2

artists from North Carolina and the Southeast, Tyndall Galleries is honored to be one of the first galleries in the

2

Tyndall Galleries, 1 October 2015, oil on canvas, 46 x 40", by Lynn Boggess.



3

3

Tyndall Galleries, Winter Light, oil on canvas, 48 x 36", by Jeffrey G. Batchelor.

country to show the works of nationally renowned landscape painters Lynn Boggess, Jacob Cooley, and Gayle Stott Lowry,

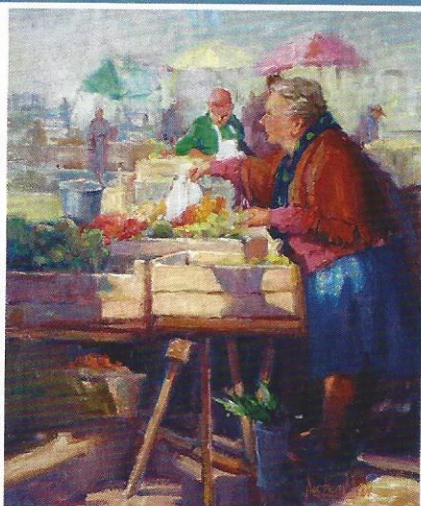
and expressionist Jane Filer. Along with these artists, it is with pleasure the gallery announces the addition this year of five new artists: Jeffrey G. Batchelor, John Beerman, Carol Bodiford, Randall W.L. Mooers, and Mariyah Sultan.

Boggess opens a solo exhibit of his newest paintings this month, which runs November 19 to December 31, with an opening reception to welcome and meet the artist on November 21 from 7 to 9 p.m.

CONTINUED ON PAGE 89



1



2

1  
Dee Beard Dean painting in plein air.

2  
**Dee Beard Dean, *Good Veggies*, oil on linen, 24 x 20".**  
Available at John Collette Fine Art, Greenville, South Carolina.

come from plein air painting, where her eye for color and composition, and her elevated senses, guide her in creating paintings filled with evocative light and dramatic shadows.

Dean finds it a joy and privilege to share her knowledge and talent with students through plein air and studio workshops across the United States and abroad. In November, she will teach a workshop at Telfair Museums in Savannah, Georgia, to integrate with the museum's *Monet and American Impressionism* exhibition. Dean and her husband, Dr. Nicolai Chalfa, sponsor annual international art trips. Her life and work are recorded in her book *A Painter by Providence*, written by Michelle Morton.

## DEE BEARD DEAN

Johns Island, SC  
[www.deebearddean.com](http://www.deebearddean.com)

Nationally-recognized artist Dee Beard Dean has been painting since childhood. She was raised in the countryside of northern Indiana and began her formal studies

at Grand Rapids College, Kendall College of Art and Design, and New York Academy of Art. For many years, Dean lived and painted in the Florida Keys, where she passed the gift of painting to her two children, both of whom are successful artists.

In her early years, Dean

was a well-known fashion designer, manufacturing her own clothing line with a national label that sold to more than 450 stores throughout the U.S. She later escaped the hectic lifestyle of the fashion world and went back to her first love, painting. Her greatest inspirations have

# DEE BEARD DEAN

[www.deebearddean.com](http://www.deebearddean.com)

*Into the City*,  
oil on linen, 24 x 24",  
Florence, Italy  
Available at Principle Gallery,  
Charleston, SC

### GALLERIES:

**Principle Gallery**  
Charleston, SC

**Anderson Fine Art Gallery**  
St. Simons Island, GA

**Coco Vivo Gallery**  
Boothbay Harbor, ME

